



BRAMPTON

Flower City

18-13-1

Report City Council

The Corporation of the City of Brampton

Date: August 23, 2010

BRAMPTON CITY COUNCIL

File: P04.MOL

DATE: SEP 15 2010

Subject: **RECOMMENDATION REPORT**
Flower City Community Campus – Milestones of Labour Monument –
Public Art Site Agreement and Implementation of Project
(Ward 4)

Contact: Karl Walsh, Director, Community Design, Parks Planning and Development

OVERVIEW:

- In August of 2007, Council approved staff's recommendation that the Milestones of Labour monument be located at the south east corner of the Flower City Community Campus at 8850 McLaughlin Road and that staff report back to Council with the final design and details of the monument and the Public Art Site Agreement;
- This report provides Council with a status update on the proposed Public Art Site Agreement between the City of Brampton and the Brampton – Mississauga & District Labour Council regarding the final design and details of the monument's installation

RECOMMENDATIONS:

1. **THAT** the report from Karl Walsh, Director, of Community Design, Parks Planning & Development, dated August 23, 2010, to the City Council meeting of September 15, 2010, **re: Recommendation Report: Flower City Community Campus Milestones of Labour Monument – Public Art Agreement and Implementation of Project.** – Ward 4 (P04.MOL) be received;
2. **THAT** the Mayor and City Clerk be authorized to execute the Public Art Site Agreement between the City of Brampton and the Brampton – Mississauga & District Labour Council, in a form approved by the City Solicitor and content satisfactory to the Commissioner Planning, Design and Development; and
3. **THAT** construction of the Milestones of Labour Monument proceed subject to execution of the Public Art Site Agreement.

18-13-2

BACKGROUND:

The Milestones of Labour monument is a joint project between the Brampton Mississauga & District Labour Council (BMDLC), and artists Rob Moir and Sally Lawrence. It is intended to commemorate labour union accomplishments while promoting health and safety in the workplace. The monument will function as a meeting place for the annual National Day of Mourning on April 28th, honouring people who have been injured or killed in the workplace. The National Day of Mourning ceremony is currently held by the BMDLC in Ken Whillans Square outside City Hall, and the BMDLC anticipates that approximately 50 -75 people will attend the annual ceremony at the monument once it is completed. The monument is also meant to serve as a resource to help educate young people about health and safety in the workplace.

On August 1, 2007, City Council approved the location for the installation of the Milestones of Labour monument (C189 - 2007). Council approved the recommendation made by BMDLC, the artists and staff members that the southeast corner of the Flower City Community Campus be the approved location for the monument. This location was recommended because it has no other city programming requirements and satisfies the needs of the BMDLC and Artists. City staff requested that the BMDLC provide a site plan that demonstrated the monument could be built in the proposed location, and then worked closely with their consultant to finalize the location and layout.

CURRENT SITUATION:

The BMDLC and its consultant have provided a site plan and detailed design drawings (see attached) to the City's satisfaction which demonstrates that the monument can be constructed at the Flower City Community Campus with no constraints.

On August 10, 2010 a Ground Breaking Ceremony was held at the Flower City Community Campus. In attendance were City of Brampton Mayor Susan Fennell, City of Mississauga Mayor Hazel McCallion, Regional Councillor Paul Palleschi, Regional Councillor John Sanderson, President of the BMDLC Charlie Courneyea, as well as other BMDLC Staff, City Staff and members of the media.

Legal Services will review and approve the form of a Public Art Site Agreement, which will be entered into between The Corporation of the City of Brampton and the BMDLC. The Agreement will address removal rights, maintenance responsibilities, indemnities, future alterations to site and artwork, site preparation, security, installation, warranties of quality of work, and right of ownership and use.

The BMDLC is responsible for obtaining resources for the construction of this project. There is also \$ 134,000 approved under Capital Grant # 075400-514 to fund services that will be integrated into the project, which will be beneficial to all of the campus users.

I 8-13-3

These services are expected to include, but will not be limited to, pathway construction, lighting, landscaping and benches.

The BMDLC has made significant steps towards securing donations of materials and money for this project, as well as securing a reputable contractor to complete the works.

CORPORATE IMPLICATIONS:

Flower City Community Campus Master Plan:

The proposed location for the monument is consistent with a conceptual master plan for the Flower City Community Campus that was presented to Committee of Council at its meeting of June 16, 2010.

CONCLUSION:

Subject to Council approval and final execution of the Public Art Site Agreement, City staff will work with the BMDLC and artists to complete the Public Art Agreement and start construction of the monument in 2010.

Respectfully submitted:

Original signed by

Approved:

Original signed by

Karl Walsh, OALA, MCIP, RPP
Director, Community Design,
Parks Planning and Development

John B. Corbett, MCIP, RPP
Commissioner, Planning, Design
and Development

Appendices:

Milestones of Labour Brochure

Drawing L1 Labyrinth Layout Plan.

Drawing L3 Overall Site Plan

Drawing L4 Labyrinth Cross Sections.

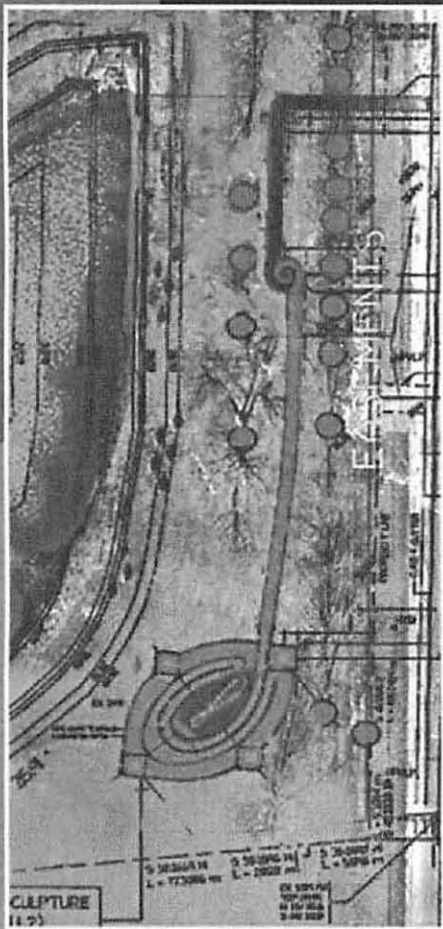
Report authored by: Paul Van de Gevel OALA

I 8-13-4

Milestones of Labour

*"You work that you may keep pace with the earth
and the soul of the earth. For to be idle is to become
a stranger unto the seasons and to step out of life's
procession that marches in majesty and proud
submission towards the infinite."*

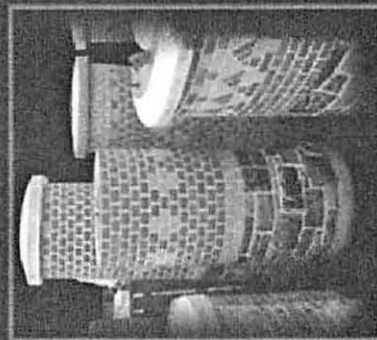
Kahlil Gibran "The Prophet"



This monument was conceived jointly by the Brampton/Mississauga and District Labour Council, The City of Brampton and artists Rob Moir and Sally Lawrence to commemorate union accomplishments, promote Health and Safety in the Workplace and celebrate work and community.

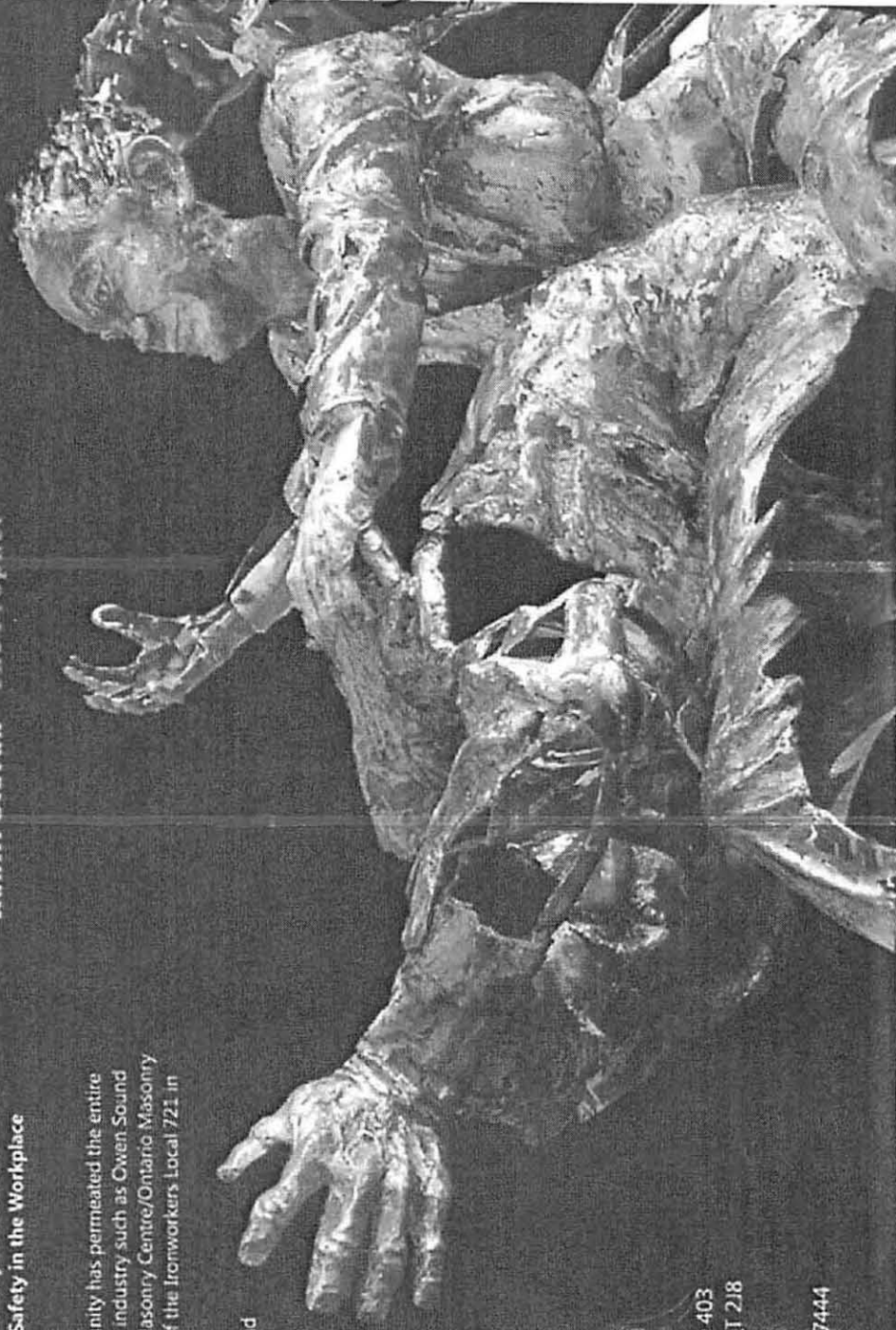
A spirit of collaboration for the greater good of the larger community has permeated the entire project. To date, many generous donations have been made from industry such as Owen Sound Ledgerock and Hanson Brick, from schools such as The Canada Masonry Centre/Ontario Masonry Training Centre and Humber College and from the Membership of the Ironworkers Local 721 in Ontario to name a few.

Such donations in the form of professional guidance, materials and labour are greatly appreciated and more are anticipated as the installation draws near. A solemn and meditative mood will be enhanced for the visitor by first passing through beautiful gates and then walking down a tree lined promenade. The visitor will walk a small spiral at the Contemplation Circle where the many donors and donations will be honoured before proceeding past a lovely pond toward the labyrinth.

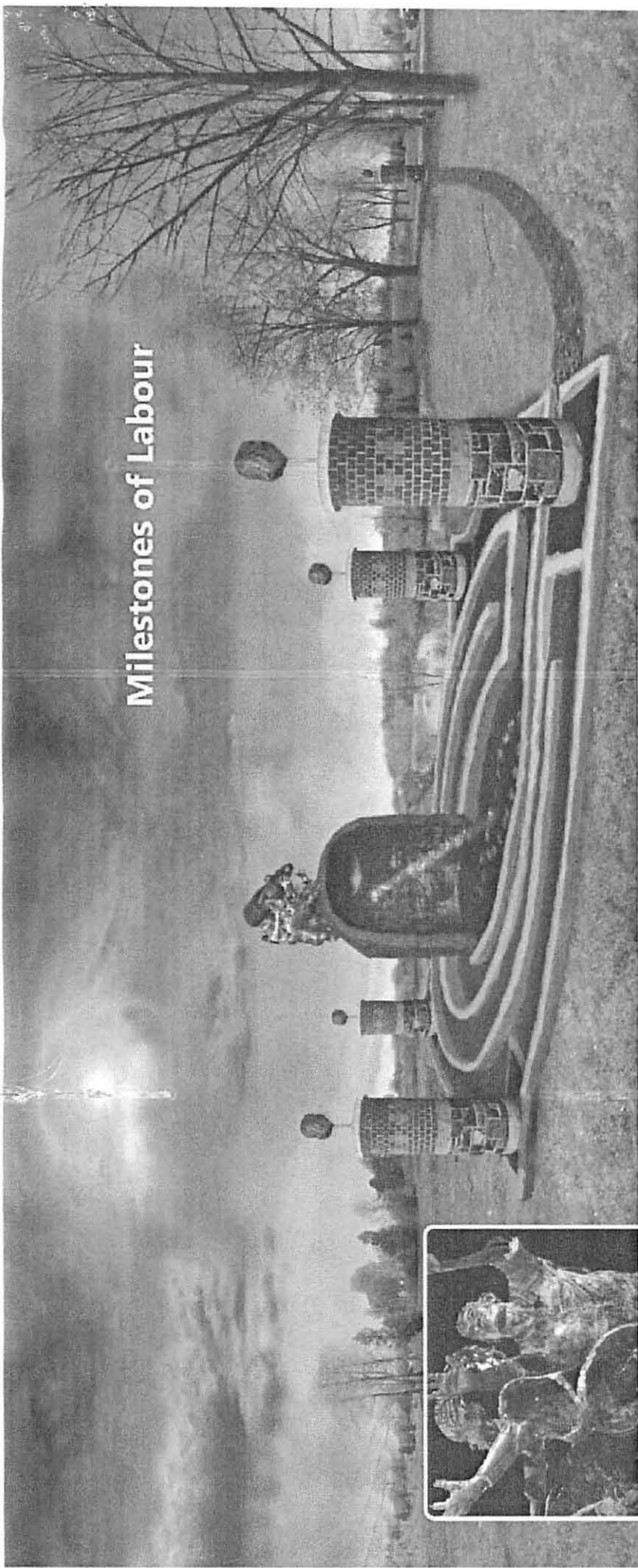


989 Derry Rd. E., Ste 403
Mississauga, ON L5T 2J8
www.bmdlc.ca

Phone: (905) 696-4744



Milestones of Labour



If the sun were observed and recorded each day at true noon for a year, the resulting shape of its movement across the sky would be a figure eight or Analemma. This sign of infinity will be marked on the ground with field stones inlaid with geode crystals. The noon time sun will beam through a small hole in the brick dome causing the geodes to sparkle as the sunlight follows this path over the course of the year. Dates that are relevant to labour and the community will be mapped on this path and highlighted with plaques. A special beam of rainbow light will mark April 28th; the National Day of Mourning for Workers Killed or Injured in the Workplace. This coloured ray will be generated by a prism inside of the Rainbow Tube that the life-sized welded figures will carry and direct from the top of the dome.

The Analemma



The sculpture depicts three life-size, welded, nickel-silver figures of different ages, genders and ethnic backgrounds climbing the curve of a dome that is part of a structure reminiscent of a brick kiln. Local century farm houses inspired this and the pillars that mark the four directions while honouring one of Brampton's oldest and continuing businesses; brick. Inside the kiln is a brick relief and mosaic that highlights some of the history of local working people for over one hundred years.

This includes the agricultural, flower, automobile, telecommunications and aerospace industries to name a few. Contained within a uniquely designed brick and granite multi-levelled labyrinth is a special sundial called an Analemma. An Analemma is a figure-eight shaped path that traces the movement of the noon time sun over the course of the year. Special dates relevant to labour and society as a whole are marked by geode crystals set into field stone and black granite.

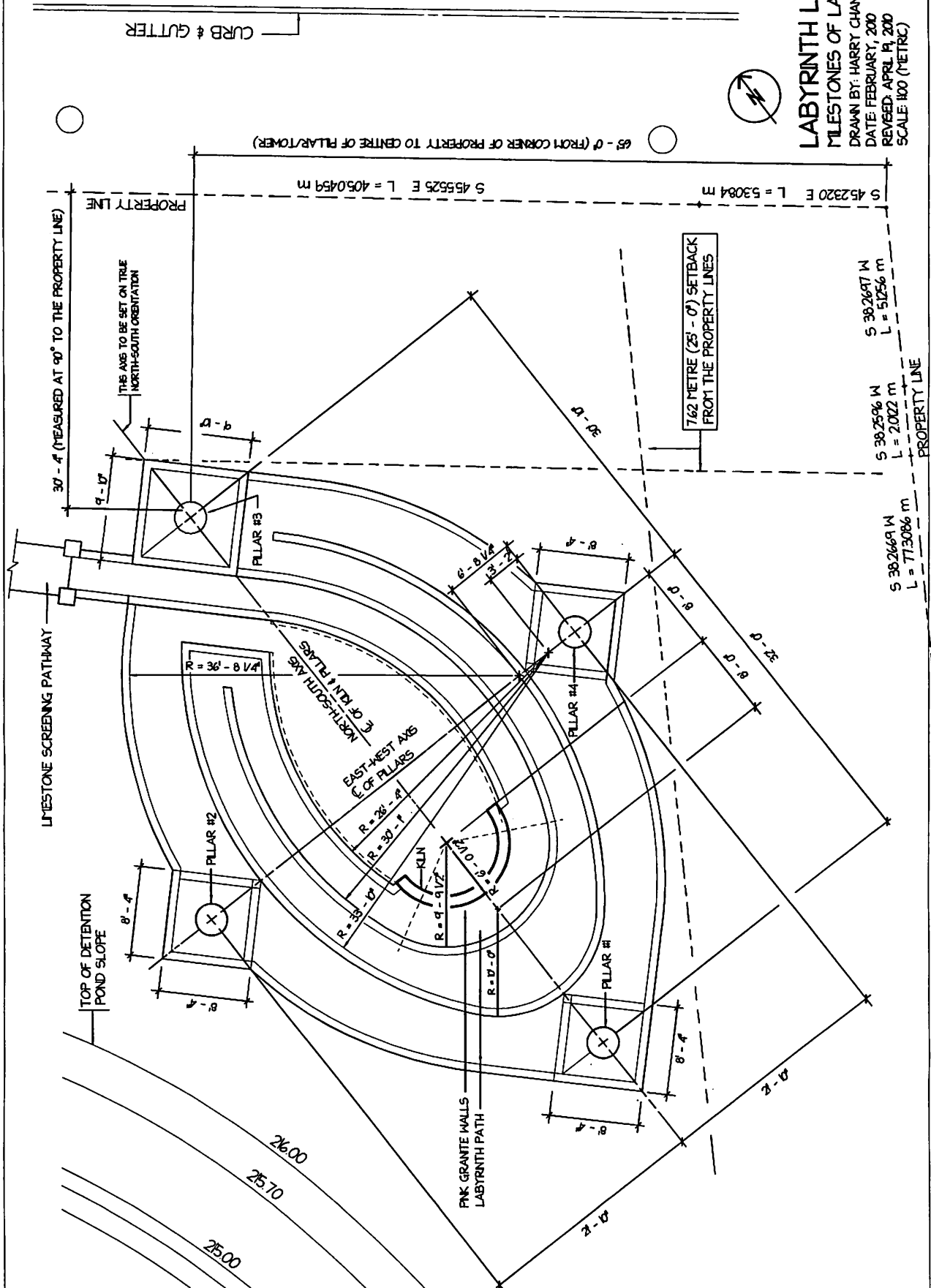
At true noon the sunlight makes the geodes sparkle thereby highlighting specific dates in the year. At 11 am on April 28th, the visitor can experience the appearance of a rainbow in the heart of the Analemma. The metal figures support a "Rainbow Reflector" that directs a ray of coloured light onto a plaque commemorating the National Day of Mourning. Khalil Gibran's wise words about work guide the visitor through the labyrinth.

There is also a chronological timeline of Union Contributions to work over the past one hundred years woven amongst a memorial to those who have perished in the workplace. The meditative and healing nature of the labyrinth walk and the enchanting spectacle of cast light help the observer to slow down and directly experience the movement of the sun and the rhythm of the day and seasons in relation to the four directions. In this way the sculpture is a place for education, healing and reflection on the nature of work and its relation to community.

Some suggested dates are:

- April 28th - Day of Mourning
- May 1st - International Workers Day
- June 21st - National Aboriginal Day
- First Monday in September - Labour Day
- September 8th - International Literacy Day
- October 17th - International Day for the Eradication of Poverty
- December 6th - National Day of Remembrance and Action on Violence Against Women
- December 10th - International Human Rights Day
- March 8th - International Woman's Day
- March 21st - International Day for the Elimination of Racial Discrimination

I 8-13-5



[illegible]

